

Immigrants legally authorized to work in Pennsylvania ARE eligible to apply for Unemployment Compensation



What is Unemployment Compensation (UC)? The Pennsylvania UC program provides temporary income for employees who have lost work due to no fault of their own. Both Pennsylvania employers and employees pay taxes into the program, with benefits intended to help workers meet expenses while they seek new employment.

Pennsylvania workers who are legally authorized to work in the United States ARE eligible to apply for PA Unemployment Compensation.

Will Unemployment Compensation impact my immigration status?

NO: Unemployment Compensation is not a public charge benefit and will not affect eligibility of applicants for citizenship, visas, readmission to the US, or lawful permanent resident status (also known as green card status).

Will I need to provide proof of work authorization to apply for Unemployment Compensation?

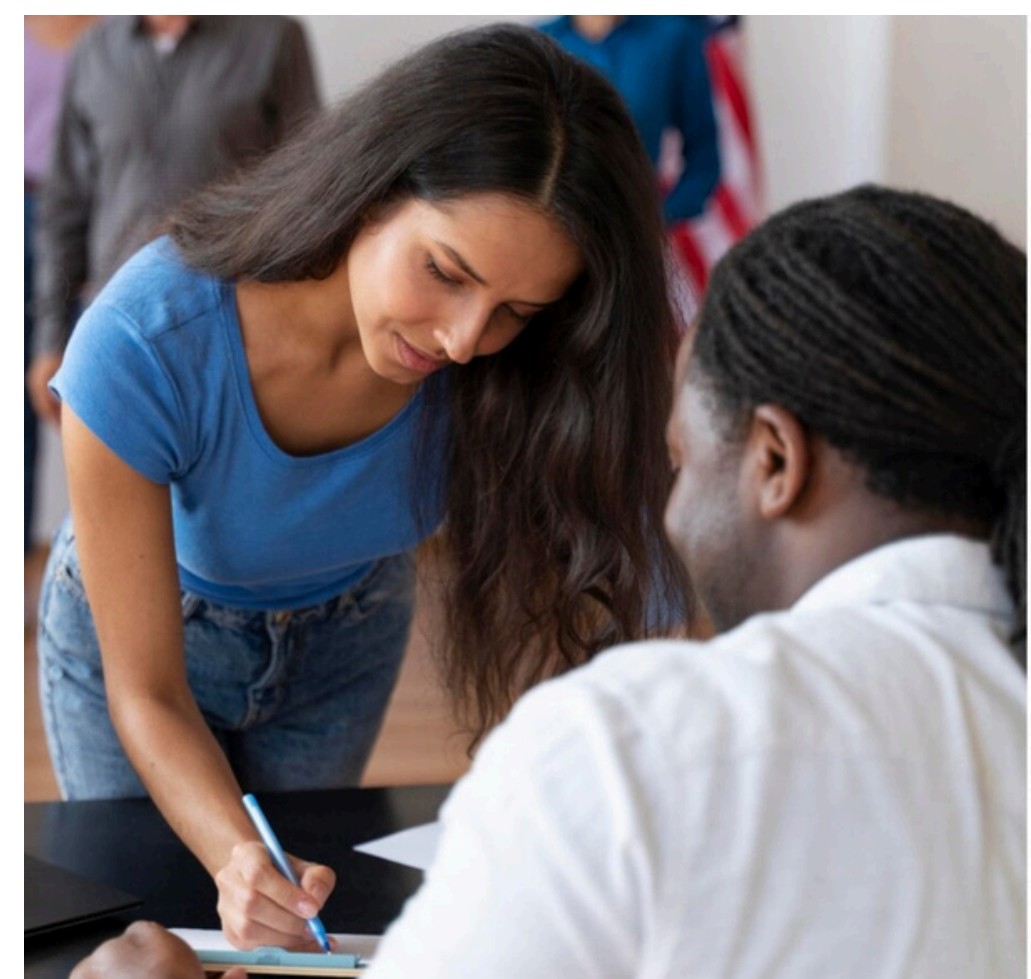
YES: You can upload COLOR photos of whatever work authorization document(s) you have as part of your claim application. Or you can email your documents to ra-liucpuc-greencard@pa.gov as soon as you file the initial claim. Be sure to request a reply to your email to confirm that your documents have been received.

I don't feel comfortable speaking or reading English.

Can someone help me?

YES: You can request help by phone or in person.

- You can call the **UC statewide hotline at 1-888-313-7284** to request a conference call with an interpreter and a person of your choice, such as a UC navigator.
- **You can schedule an in-person appointment for UC Connect assistance by calling 855-284-8545** and requesting an interpreter for the appointment.
- You can also request interpretation and translation for appeal hearings using the phone number, email, or address provided on your notice of hearing.



To apply for UC, visit <https://benefits.uc.pa.gov/> or call 1-888-313-7284. If you have issues receiving the help that you need, you can call 855-284-8545 to set up an in-person appointment to file your claim or receive help with an existing claim.